



PART #

JOB NAME

TYPE



- Streamline your inventory w/SUPERFLEX. 12 SKUs in 1. Can be in-field configured to 4 wattages & 3 CCTs.
- Available standard (control ready) or with **SIMPLE & NETWORK LIGHTING CONTROLS** (see pg. 2 & 6-9)
- Use this fixture in so many places such as stairwell, strip, vanity & continuous run fixture.
- Easily accessorize the LIVC to fit your style w/ optional end caps.
- Extra wide 6" width to cover old footprint.

### ACCESSORIES



SECURITY



MODERN1



MODERN2



JUNCTION BRACKET

**SUPERFLEX** SWITCH BETWEEN  
3 WATTAGES & 3 CCTS



10 YEAR WARRANTY



120-277V



0-10V DIM TO OFF



12V AUX OUTPUT



OPTIONAL NETWORK LIGHTING CONTROL



OPTIONAL SIMPLE OCC



OPTIONAL EMG BATTERY BACKUP



EFFICACY



CRI



OPERATING TEMP



100,000hrs

PART #	UPC	FLEXWATT	LUMENS	FLEXCOLOR
RPT-P-LIVC-G2-2FT-20L-840-FWFC-R-S1	844006010911	10W/ <b>15W</b> /20W/30W	1240-3750	3000K/3500K/ <b>4000K</b>
RPT-P-LIVC-G2-2FT-20L-840-FWFC-OCC-R-S1	844006010942	10W/ <b>15W</b> /20W/30W	1240-3750	3000K/3500K/ <b>4000K</b>
RPT-P-LIVC-G2-3FT-20L-840-FWFC-R-S1	844006010928	10W/ <b>15W</b> /20W/30W	1240-3750	3000K/3500K/ <b>4000K</b>
RPT-P-LIVC-G2-3FT-20L-840-FWFC-OCC-R-S1	844006010959	10W/ <b>15W</b> /20W/30W	1240-3750	3000K/3500K/ <b>4000K</b>
RPT-P-LIVC-G2-4FT-20L-840-FWFC-R-S1	844006010935	10W/ <b>15W</b> /30W/40W	1365-5120	3000K/3500K/ <b>4000K</b>
RPT-P-LIVC-G2-4FT-20L-840-FWFC-OCC-R-S1	844006010966	10W/ <b>15W</b> /30W/40W	1365-5120	3000K/3500K/ <b>4000K</b>



HEADQUARTERS & TRAINING CENTER • Cary, IL | INNOVATION & MANUFACTURING CENTER • Middleton, MA

847.380.3540 • led-llc.com • sales@led-llc.com

11.04.24 Information is subject to change without notice.

**Light Efficient Design**



### PART NUMBER BUILDER - SEE PG. 3 FOR ORDERING DIRECTIONS

MFR	CLASS	PRODUCT	GENERATION	LENGTH	LUMENS	COLOR	FUNCTION	CONTROLS	EMG	REF	AA
RPT	P	LIVC	G3			8XX	FWFC		EMG	R-S1	
				2FT 3FT 4FT	15L, 20L, 30L, 40L 15L, 20L, 30L, 40L 15L, 20L, 40L, 50L	8=85 CRI  XX=CCT 30=3000K 35=3500K 40=4000K	FWFC = FLEXWATT + FLEX COLOR	-OCC -OCBT -BT	4W - 500 LUMENS @ 90 MIN		-AA = AARA- SECTION 1605  BLANK = STANDARD

ORDERING EXAMPLE: RPT-P-LIVC-G2-2FT-15L-840-FWFC-OCC-R-S1

DEFAULT LUMEN PACKAGE (WATTAGE AND CCT) ARE SHOWN BELOW IN BOLD. There are two ways to achieve a non-default lumen package and/or CCT -  
**1.** You can easily adjust in field via our FlexWatt and FlexColor internal switches. **2.** Have us adjust the FlexWatt and FlexColor at the factory for an additional charge.



If you require BAA (ARRA Section 1605) add  
-AA at end of part number.

Emergency battery backup options can also be ordered separately. See pages 6 & 7 for more information.

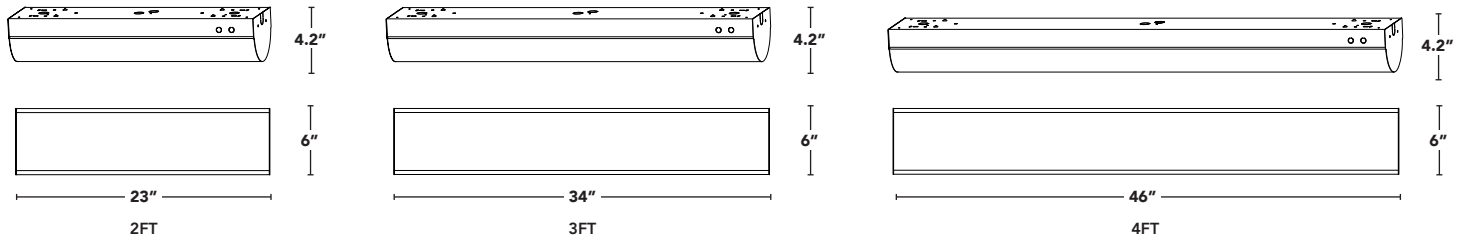
For BAA projects, please contact our projects quotations team.

### CONTROL OPTIONS

SIMPLE LIGHTING CONTROL	NETWORK LIGHTING CONTROLS	
<b>-OCC</b> MICROWAVE MOTION SENSOR (STANDARD) IR12 REMOTE 	<b>-OCBT</b> NETWORK LIGHTING CONTROL NODE + MICROWAVE MOTION & DAYLIGHT SENSOR IR12 REMOTE & SILVAIR APP  IR REMOTE SETS SENSOR RANGE ONLY	<b>-BT</b> NEWTOWK LIGHTING CONTROL NODE SILVAIR APP 



Light Efficient Design/RemPhos has partnered with Sil vair to offer a wireless Bluetooth-mesh eco-system fixture integral control. Sil vair is listed on the DLC NLC OPL certified to Technical Requirements Version 5.1. Our Sil vair controls meet all eligibility criteria of integral, fixture-mounted, addressable sensors with motion and photocell/ambient light-sensing capabilities along with embedded programming that can be configured and networked. System can control motion response, illumination levels, and scheduling.

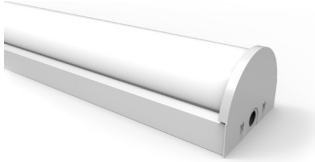


PART #	DLC CODE	DLC LEVEL	PRIMARY USE	CCT	WATTAGE	DEFAULT LUMENS
RPT-P-LIVC-G2-2FT-15L-8XX-FWFC-[OCC,Blank]-[BAA,A,Blank]	S-Q517AX	STANDARD	Direct Linear Ambient Luminaires	30/35/40K	10/15/20/30W	1331
RPT-P-LIVC-G2-2FT-20L-8XX-FWFC-[OCC,Blank]-[BAA,A,Blank]	S-7NK9IP		Direct Linear Ambient Luminaires	30/35/40K	10/15/20/30W	1972
RPT-P-LIVC-G2-2FT-30L-8XX-FWFC-[OCC,Blank]-[BAA,A,Blank]	S-1MZWDE		Direct Linear Ambient Luminaires	30/35/40K	10/15/20/30W	2603
RPT-P-LIVC-G2-2FT-40L-8XX-FWFC-[OCC,Blank]-[BAA,A,Blank]	S-I3FMGT		Direct Linear Ambient Luminaires	30/35/40K	10/15/20/30W	3701
RPT-P-LIVC-G2-3FT-15L-8XX-FWFC-[OCC,Blank]-[BAA,A,Blank]	S-PNJIDE		Direct Linear Ambient Luminaires	30/35/40K	10/15/20/30W	1346
RPT-P-LIVC-G2-3FT-20L-8XX-FWFC-[OCC,Blank]-[BAA,A,Blank]	S-AEQK3J		Direct Linear Ambient Luminaires	30/35/40K	10/15/20/30W	1970
RPT-P-LIVC-G2-3FT-30L-8XX-FWFC-[OCC,Blank]-[BAA,A,Blank]	S-7UZ1FA		Direct Linear Ambient Luminaires	30/35/40K	10/15/20/30W	2625
RPT-P-LIVC-G2-3FT-40L-8XX-FWFC-[OCC,Blank]-[BAA,A,Blank]	S-3O571S		Direct Linear Ambient Luminaires	30/35/40K	10/15/20/30W	3623
RPT-P-LIVC-G2-4FT-15L-8XX-FWFC-[OCC,Blank]-[BAA,A,Blank]	S-RWJCP9		Direct Linear Ambient Luminaires	30/35/40K	10/15/30/40W	1384
RPT-P-LIVC-G2-4FT-20L-8XX-FWFC-[OCC,Blank]-[BAA,A,Blank]	S-GAV59B		Direct Linear Ambient Luminaires	30/35/40K	10/15/30/40W	1993
RPT-P-LIVC-G2-4FT-40L-8XX-FWFC-[OCC,Blank]-[BAA,A,Blank]	S-29M5DO		Direct Linear Ambient Luminaires	30/35/40K	10/15/30/40W	3934
RPT-P-LIVC-G2-4FT-50L-8XX-FWFC-[OCC,Blank]-[BAA,A,Blank]	S-4EUG3D		Direct Linear Ambient Luminaires	30/35/40K	10/15/30/40W	4999

PART #	DLC CODE	DLC LEVEL	PRIMARY USE	CCT	WATTAGE	DEFAULT LUMENS
RPT-P-LIVC-G2-2FT-15L-8XX-FWFC-[OCC,Blank]-[BAA,A,Blank]	PKNN1ULV	PREMIUM	Stairwell and Passageway Luminaires	30/35/40K	10/15/20/30W	1331
RPT-P-LIVC-G2-2FT-20L-8XX-FWFC-[OCC,Blank]-[BAA,A,Blank]	P9VXJ3DP		Stairwell and Passageway Luminaires	30/35/40K	10/15/20/30W	1972
RPT-P-LIVC-G2-2FT-30L-8XX-FWFC-[OCC,Blank]-[BAA,A,Blank]	PSKN3422		Stairwell and Passageway Luminaires	30/35/40K	10/15/20/30W	2603
RPT-P-LIVC-G2-2FT-40L-8XX-FWFC-[OCC,Blank]-[BAA,A,Blank]	PUW5V0H3		Stairwell and Passageway Luminaires	30/35/40K	10/15/20/30W	3701
RPT-P-LIVC-G2-3FT-15L-8XX-FWFC-[OCC,Blank]-[BAA,A,Blank]	P1WMOZAQ		Stairwell and Passageway Luminaires	30/35/40K	10/15/20/30W	1346
RPT-P-LIVC-G2-3FT-20L-8XX-FWFC-[OCC,Blank]-[BAA,A,Blank]	PKXH2T01		Stairwell and Passageway Luminaires	30/35/40K	10/15/20/30W	1970
RPT-P-LIVC-G2-3FT-30L-8XX-FWFC-[OCC,Blank]-[BAA,A,Blank]	PQ4RBMKS		Stairwell and Passageway Luminaires	30/35/40K	10/15/20/30W	2625
RPT-P-LIVC-G2-3FT-40L-8XX-FWFC-[OCC,Blank]-[BAA,A,Blank]	PJM7TJJ6		Stairwell and Passageway Luminaires	30/35/40K	10/15/20/30W	3623
RPT-P-LIVC-G2-4FT-15L-8XX-FWFC-[OCC,Blank]-[BAA,A,Blank]	P3PV9FRP		Stairwell and Passageway Luminaires	30/35/40K	10/15/30/40W	1384
RPT-P-LIVC-G2-4FT-20L-8XX-FWFC-[OCC,Blank]-[BAA,A,Blank]	PQGE3JA6		Stairwell and Passageway Luminaires	30/35/40K	10/15/30/40W	1993
RPT-P-LIVC-G2-4FT-40L-8XX-FWFC-[OCC,Blank]-[BAA,A,Blank]	P1JATCDU		Stairwell and Passageway Luminaires	30/35/40K	10/15/30/40W	3934
RPT-P-LIVC-G2-4FT-50L-8XX-FWFC-[OCC,Blank]-[BAA,A,Blank]	PBFO9AQV		Stairwell and Passageway Luminaires	30/35/40K	10/15/30/40W	4999



### ACCESSORIES

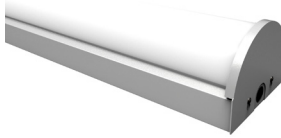


#### SECURITY END CAP

White metal end cap transforms LIVC into vandal & tamper resistant fixture.

**USES** university dorms, apartment buildings and more.

**RPT-P-LIVC-G2-ENDCAP-SECURITY1**

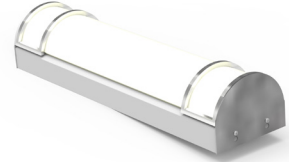


#### MODERN1 END CAP

Single bar brushed-nickle metal end cap creates a premium elegant look

**USES** hotels, high-end apartments, bathroom vanity

**RPT-P-LIVC-G2-ENDCAP-MODERN1**



#### MODERN2 END CAP

Double bar brushed-nickle metal end cap creates a premium elegant look

**USES** hotels, high-end apartments, bathroom vanity or mount fixture vertically for a beautiful wall sconce

**RPT-P-LIVC-G2-ENDCAP-MODERN2**



#### JUNCTION BRACKET

For professional looking continuous runs

**RPT-P-LIVC-G2-JUNCTION-WHT**



#### V-HOOK

Used to hang the LIVC from chain or cable  
(Includes 2 V-Hooks; chain/cable not included)

**RPT-P-LIVC-G2-VHOOK-SET**



#### ON/OFF PULL CHAIN

Quick ON/OFF pull chain feature.

**USES** hospitals, nursing homes & other places where easy access is necessary.

**PART NUMBER ADDER -SP13**



HOW DOES IT WORK?

We custom designed our own LED driver in-house so that the driver operates at maximum efficiency at each wattage. Standard LED drivers would have reduced efficiency.

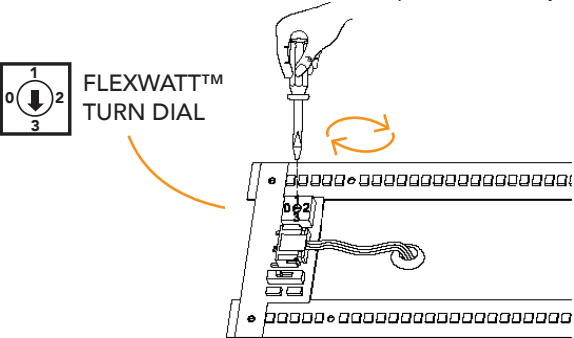
WHAT ARE THE WATTAGE CHOICES?

The 2ft, 3ft & 4ft length fixtures all have different wattage/lumen offerings. Please reference this table and the ordering guide on the last page of the cut sheet.

FLEXWATT TURN DIAL POSITION				
LENGTH	0	1	2	3
2FT	10W (1500LM)	15W (2000LM)	20W (3000LM)	30W (4000LM)
3FT	10W (1500LM)	15W (2000LM)	20W (3000LM)	30W (4000LM)
4FT	10W (1500LM)	15W (2000LM)	30W (4000LM)	40W (5000LM)

HOW EASY IS IT TO SET?

Simply open the fixture, and adjust the 4-position turn dial with a small, flat-head screw driver. Takes 30 seconds max. Can be "locked-out" to prevent field-adjustability if desired.



HOW DOES IT WORK?

We select the highest efficacy, multiple color LED diodes from quality suppliers, and mount them on the same circuit board. A proprietary LED binning process ensures color consistency between fixtures. The FlexColor technology controller ensures the correct color is selected, every time.

WHAT ARE THE COLOR CHOICES?

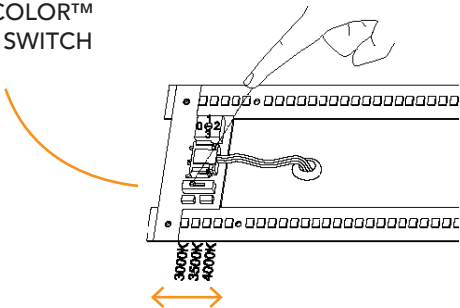
The 2ft, 3ft & 4ft length fixtures all have the same 3 choices for color temperature. 3000k, 3500k and 4000k. Please reference this table and the ordering guide on the last page of the cut sheet.

FLEXCOLOR SLIDE SWITCH POSITION			
LENGTH	TOP	MIDDLE	BOTTOM
2FT	3000K	3500K	4000K
3FT	3000K	3500K	4000K
4FT	3000K	3500K	4000K

HOW EASY IS IT TO SET?

Simply open the fixture, and adjust the 3-position slide switch with your fingers. Takes 30 seconds max. Can be "locked-out" to prevent field-adjustability if desired.

FLEXCOLOR™  
SLIDE SWITCH





## URNS ON WHEN POWER GOES OFF



90 MIN RUN TIME

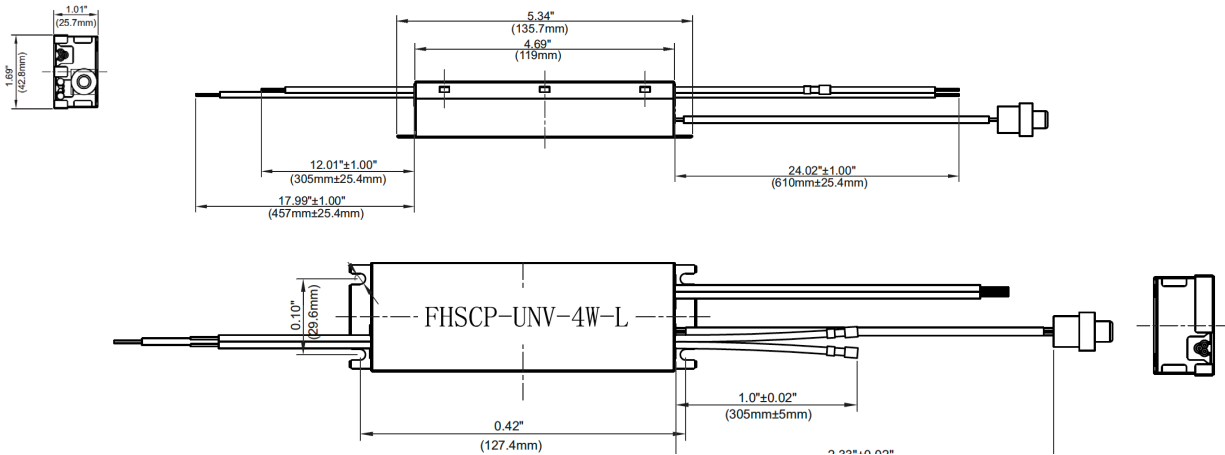


41°F TO 131°F

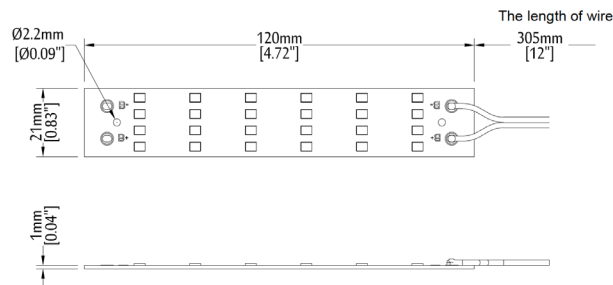


**OPTIONAL EMG  
BATTERY BACKUP**

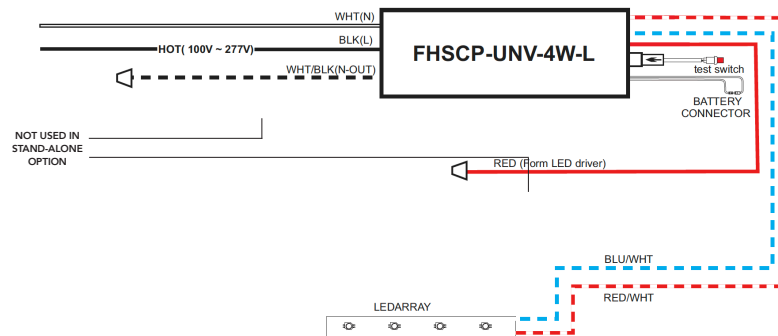
## EMG DRIVER DIMENSIONS



## LED MODULE DIMENSIONS



## EMG WIRING DIAGRAM





PRODUCT SPEC	INFORMATION
Input Voltage / Frequency	120-277V~ , 50/60Hz
Input Current	100mA Max
Input Power	3W
Standby Power	<0.85W
Driver Type	Constant Power
Current Rated	333mA@12V,73mA@55V
Output Voltage Range	12-55V
Output Power	4W
Output Class	LED Class2
Number of Output Channels	1Channel
Test Switch	Test Switch Included
Pilot Light	Red Light
Battery ON/OFF	wire+Connector
Dry Location	Dry Location
Input Surge Protection	Line-Neutral 1kV, Line & Neutral-Ground 2kV
Emergency Mode Protections	Battery Over Voltage Protection Battery Under Voltage Protection Battery Hot Plug at Normal Mode Protection Battery Hot Plug at Emergency Mode Protection
RFI/EMI	FCC Part 15 ClassA
Ambient Operating Temperature Range	5°C To 55°C(41°F To 131°F)
Battery Type	LiFePO4
Battery Voltage	6.4V
Battery Capacity	2Ah Max
Battery Charge Current	165mA
Battery Recharge Time	12 Hours
Battery Discharge Time	Min 90 Minutes
Service Life	50,000 hours
Warranty	5 years



ADDING -OCC TO THE LIVC PART NUMBER UPGRADES THE FIXTURE WITH A FACTORY INSTALLED **SIMPLE CONTROL** UTILIZING A MICROWAVE MOTION SENSOR. IT ALSO COMES EQUIPPED WITH A DAYLIGHT HARVESTING SENSOR TO DIM AND/OR TURN OFF THE LBI MAX WHEN THE SPACE IS UNOCCUPIED OR SURROUNDING NATURAL LIGHT LEVELS ARE HIGH.



### ATTRIBUTES

DETECTION TECHNOLOGY	MICROWAVE
DETECTION TYPE	OCCUPANCY
SENSOR POWER	12VDC
GROUPABLE	NO
NETWORK LIGHTING CONTROL	NO
COMMISSIONING METHOD	IR REMOTE
REMOTE	IR12
DAYLIGHT HARVESTING	YES
HI OR LOW TRIM	NO
BI-LEVEL DIMMING	YES
NETWORK TECHNOLOGY	NONE
INSTALLATION TYPE	INTERNAL
DLC LISTED	YES
CONTROL CAPACITY	10 FIXTURES

### IR12 REMOTE



Permanent ON/OFF Function

Dim+/-

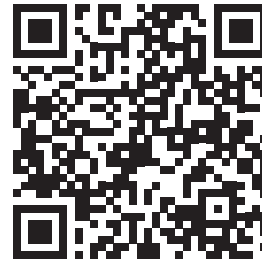
Sensor Mode

Reset Function

Ambient Learn

Test Mode

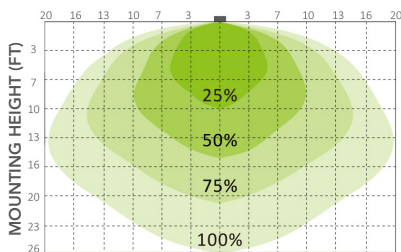
FOR MORE INFORMATION ON THE IR12 REMOTE SCAN BELOW



### DETECTION PATTERN / OCC

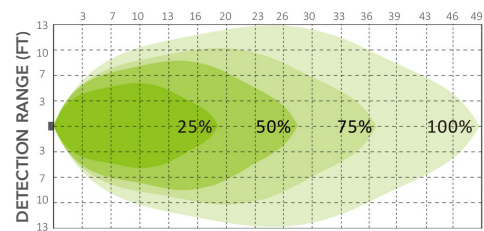
#### CEILING MOUNTING

DETECTION RANGE (FT)



#### WALL MOUNTING

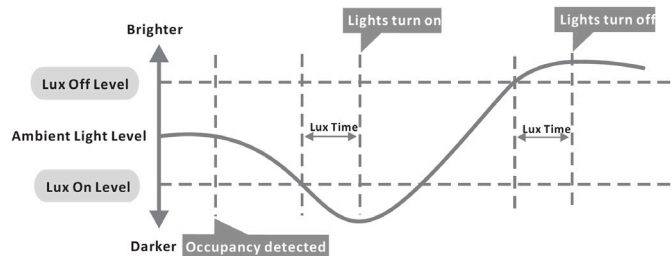
DETECTION DISTANCE (FT)



### DAYLIGHT HARVESTING / OCC

Sensor detects the difference between natural light and artificial light (lamp) from behind the diffuser, switch on automatically (even without movements) when the ambient light is below the target value, and switch off automatically whenever the artificial light is not required (ambient light meets target level).

**NOTE** LUX-OFF SAMPLING TIME - 30S. LUX-ON SAMPLING TIME - 10S. LUX-ON FUNCTION WILL ONLY OPERATE WITHOUT MOTION WHEN STANDBY IS SET TO + ∞.







ADDING **-OCBT** TO THE LIVC PART NUMBER UPGRADES THE FIXTURE WITH A FACTORY INSTALLED **NETWORK LIGHTING CONTROL**. ONCE CONNECTED THROUGH THE SILVAIR APP, THE BLUETOOTH MICROWAVE MOTION SENSOR AND DAYLIGHT HARVESTING TECHNOLOGY CAN MAXIMIZE ENERGY SAVINGS.



### ATTRIBUTES

<b>DETECTION TECHNOLOGY</b>	MICROWAVE
<b>DETECTION TYPE</b>	OCCUPANCY / VACANCY
<b>SENSOR POWER</b>	12VDC
<b>GROUPABLE</b>	YES
<b>NETWORK LIGHTING CONTROL</b>	YES
<b>COMMISSIONING METHOD</b>	SILVAIR APP* + IR REMOTE FOR RANGE SETTING
<b>REMOTE</b>	IR 12
<b>DAYLIGHT HARVESTING</b>	YES
<b>HI OR LOW TRIM</b>	YES
<b>BI-LEVEL DIMMING</b>	YES
<b>NETWORK TECHNOLOGY</b>	BLUETOOTH
<b>INSTALLATION TYPE</b>	INTERNAL
<b>DLC LISTED</b>	YES + DLC NLC
<b>CONTROL CAPACITY</b>	10 FIXTURES

\*SEE PAGE 10 FOR MORE INFORMATION ON SILVAIR APP

### IR12 REMOTE

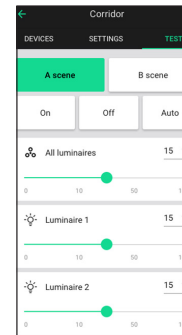


IR REMOTE FOR SENSITIVITY RANGE SETTING ONLY

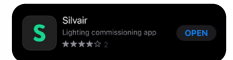


FOR MORE INFO SCAN ABOVE

### SILVAIR APP



SILVAIR IS A SOFTWARE AND COMMISSIONING APP THAT CONNECTS AND CONTROLS LIGHTING FIXTURES USING BLUETOOTH MESH TECHNOLOGY.

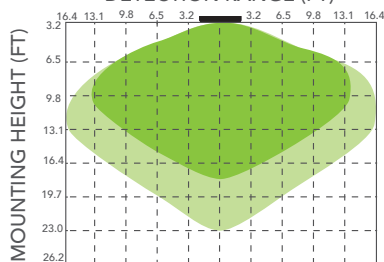


FOR MORE INFO SCAN ABOVE OR SEE PG. 10

### DETECTION PATTERN / OCBT

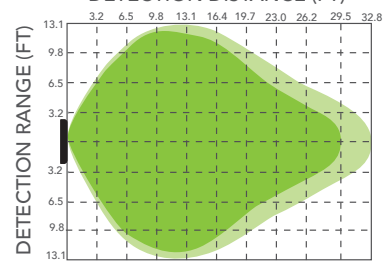
#### CEILING MOUNTING

DETECTION RANGE (FT)

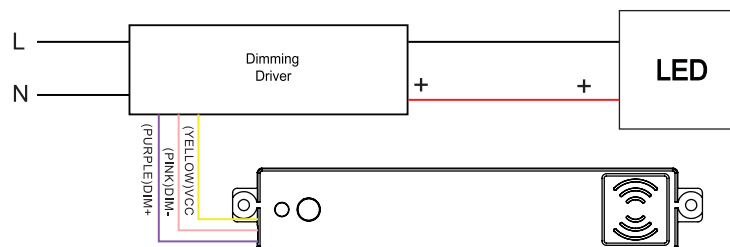


#### WALL MOUNTING

DETECTION DISTANCE (FT)



### WIRING DIAGRAM / OCBT





ADDING **-BT** TO THE LIVC PART NUMBER UPGRADES THE FIXTURE WITH A FACTORY INSTALLED **NETWORK LIGHTING CONTROL**. CONNECT THROUGH THE SILVAIR APP ON ROBUST BLUETOOTH MESH. CAN BE PAIRED WITH A SWITCH FOR WIRELESS DIMMING CONTROL OR CONNECT TO OTHER FIXTURES WITH SENSORS TO MAXIMIZE COST SAVINGS.

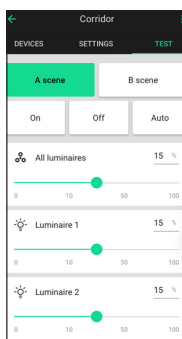


## ATTRIBUTES

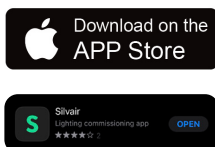
<b>DETECTION TECHNOLOGY</b>	NONE
<b>DETECTION TYPE</b>	NONE
<b>SENSOR POWER</b>	12VDC
<b>GROUPABLE</b>	YES
<b>NETWORK LIGHTING CONTROL</b>	YES
<b>COMMISSIONING METHOD</b>	NONE
<b>REMOTE</b>	SILVAIR APP*
<b>DAYLIGHT HARVESTING</b>	NO
<b>HI OR LOW TRIM</b>	YES
<b>BI-LEVEL DIMMING</b>	NO
<b>NETWORK TECHNOLOGY</b>	BLUETOOTH
<b>INSTALLATION TYPE</b>	INTERNAL
<b>DLC LISTED</b>	YES + DLC NLC

\*SEE PAGE 10 FOR MORE INFORMATION ON SILVAIR APP

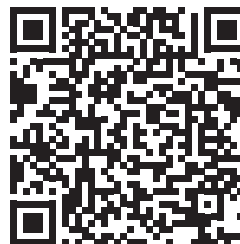
## SILVAIR APP

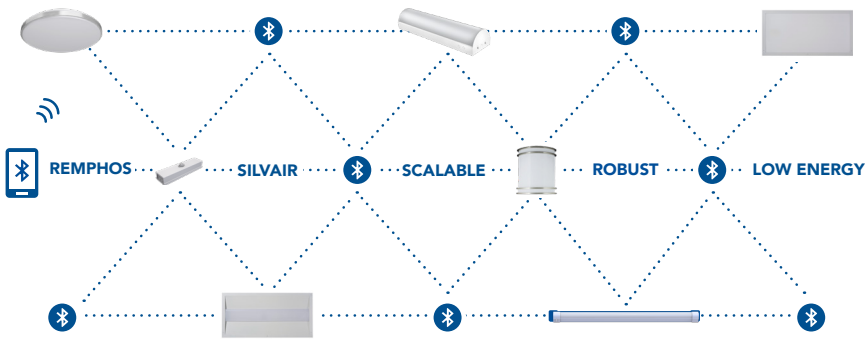


SILVAIR IS A SOFTWARE AND COMMISSIONING APP THAT CONNECTS AND CONTROLS LIGHTING FIXTURES USING BLUETOOTH MESH TECHNOLOGY.



FOR MORE INFORMATION ON THE SILVAIR APP SCAN BELOW OR SEE PG. 10





### WHAT IS SILVAIR?

Silvaair is a software and commissioning app that connects and controls lighting fixtures using Bluetooth mesh technology.

### HOW DOES IT CONNECT?

Silvaair can be set up in advance through the cloud and the Silvaair portal. It can also be commissioned in the field with the IOS app.

### DOWNLOAD SILVAIR APPS



MOBILE APP Apple App Store  
or  
WEB APP [platform.silvaair.com](http://platform.silvaair.com)

